

**Indiana-Course Aligned Assessment
Anatomy and Physiology – Sample Items**

1. In which order would a splinter pierce the epidermal layers of a person's skin?

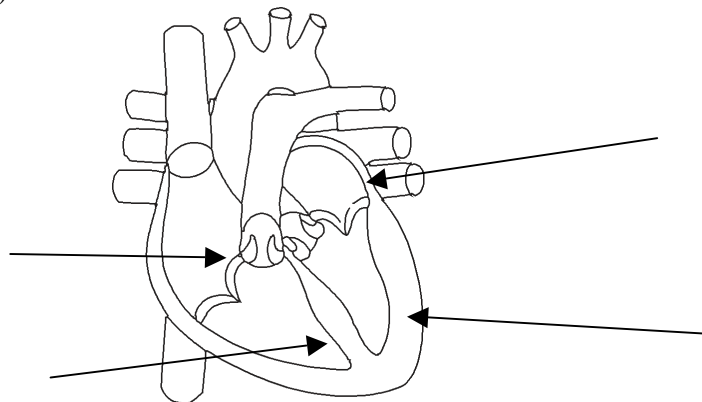
- A basale, spinosum, granulosum, corneum
- B corneum, granulosum, spinosum, basale
- C granulosum, basale, spinosum, corneum, lucidum
- D basale, spinosum, granulosum, lucidum, corneum

2. The best skeletal muscle relaxant to administer to a surgery patient is one that

- A allows sodium to enter muscle cells
- B pumps potassium out of muscle cells
- C bathes muscle cells with calcium ions
- D blocks acetylcholine receptors of muscle cells

3. On the diagram below, label the 4 chambers of the heart and describe the relative oxygen and carbon dioxide levels for each chamber. [2 points]

Right atrium (RA)
Right ventricle (RV)
Left atrium (LA)
Left ventricle (LV)



Answer Key

Item	Answer	Alignment
1	B	AP.3.1
2	D	AP.5.3
3	Top Left: RA, low oxygen, high carbon dioxide Top Right: LA, high oxygen, low carbon dioxide Bottom Left: RV, low oxygen, high carbon dioxide Bottom Right: LV, high oxygen, low carbon dioxide	AP.10.3